



**Got Stress?
Feed a Longhorn.
Hike a trail.
Sneak up on a white tail.
Kiss a cowboy.**

Meridian, Texas

Top of the Hill Country

**Chamber of Commerce
Membership Directory
and Visitor Guide**



**(254) 435-2966
meridian-chamber.com**

Welcome to Meridian

Roughly fifty-five miles south of the Dallas/Fort Worth suburban outskirts, gentle hills rise to meet you and beautiful vistas engulf you in the enchantment of the Texas hill country.

The Meridian Chamber of Commerce welcomes you to Meridian, the county seat of beautiful Bosque County. Situated on rolling terrain with bluffs over-looking the Bosque River, Meridian sits at the intersection of State highways 6, 22, 144 and 174.

Located at 107 N. Erath, Suite B, the Chamber is an active organization made up of businesses and individuals working for economic development, tourism and civic improvement.

Our mission is to promote expansion and growth of businesses through commerce and tourism. We partner with other local organizations in promoting programs designed to increase civic pride and make Meridian a great place to live, work, play, eat, and shop.

The board of directors meets the first Wednesday of each month and our monthly membership luncheon is held on



the second Thursday of each month.

If you are visiting for the first time or looking to relocate, the chamber can help with maps, guides and important information. Much of our local statistics are included in this publication, (see page 16) however, if you need more information, please contact



the Meridian Chamber and we will be happy to help.

Contact the Chamber at meridian-chamber@sbcglobal.net, (254) 435-2966 or P.O. Box 758, Meridian, TX, 76665. Our office is open Monday through Friday, 9am to 4pm. The Chamber website—www.meridian-chamber.com—lists upcoming events, a quarterly newsletter and a current list of chamber members.

County Seat

The historical courthouse, built in 1886, has been designated a Texas Historical Landmark. Completely restored in 2007, bringing back its Gothic clock tower and turrets, the courthouse now provides the centerpiece for the downtown square.

Shopping and Restaurants

Stroll the streets for art, antiques, fine cuisine and collectibles. Cross the Bosque River and buy a lariat, hunting gear or hunting vehicle. Looking for a real home cooked meal? You'll find that and much more in Meridian.

World-renown Artists

Meridian is home to world-renown artists, up-and-coming artists (see page 7), and famed musicians (see page 14).

Red Caboose Winery

Be sure to tour the award-winning Red Caboose Winery where wine is fermented, stored and chilled using geothermal and solar technology. The self-sustained winery also heats and cools their building using this technology, (see page 5).



Recreation

In Meridian, the recreation possibilities are endless. From hunting and fishing, to bird-watching and stargazing, it's a recreation destination. Come to Meridian to "de-stress" and replenish what's been drained out of you in the city.

Meridian State Park

Hidden away in the wooded hills northwest of Waco lies Meridian State Park—a haven for nature lovers and fishing enthusiasts—where daybreak is peaceful, sunsets are serene and the night sky explodes with stars. At Meridian State Park you'll find all that is associated with a major lake resort.

The park's 72-acre lake offers fishing, swimming and no-wake boating. A hiking trail encircling Lake Meridian features limestone outcroppings with fossils, a scenic overlook and aquatic vegetation. Birdwatching is excellent and there is a good chance of seeing the rare Golden-cheeked Warbler which only nests in central Texas. The park provides an environment of fun for the whole family.

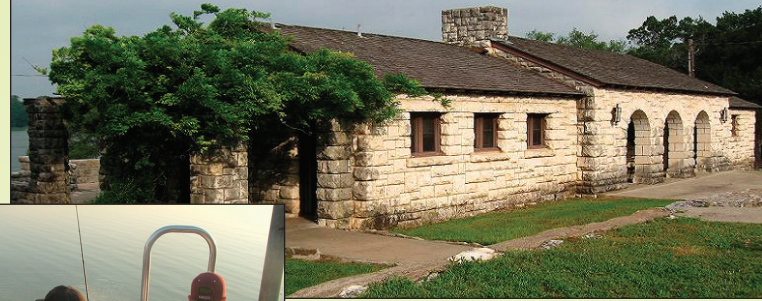
- *Camping:* Sites with water, electricity, and sewer; water and electricity; water only or primitive. Screened shelters also available.
- *Dining Hall:* With kitchen, seating and meeting areas for 50; restrooms, heating and A/C.
- *Picnicking:* Picnic sites with tables and grills.
- *Swimming:* Swim at own risk in lake.
- *Boating:* No-wake boating on lake; boat dock and ramp.
- *Fishing:* Possible catches in lake include bass, crappie, catfish and bream.
- *Trails:* 5 miles of hiking and nature trails.

Lions Park

Lions Park, located on the banks of the Bosque River in Meridian, is a delightful spot for picnics, family day gatherings, outdoor dances or for a few quiet moments. State-of-the-art playground equipment is available for the youngsters.

Bosque Valley Golf Club

Our Bosque Valley Golf Club is a beautifully designed nine-hole course located just a few miles from Meridian. It hosts various tournaments throughout the year. Deer grazing are more often seen than "birdies" on this challenging, but rewarding course.



Enjoy a lakeside retreat at Meridian State Park.

Education

The Meridian Independent School District encompasses 147 square miles of Bosque County. The two campuses, Meridian Elementary School (Grades Pre-K – 6) and Meridian High School (Grades 7-12), serve the educational needs of approximately 517 students. Both campuses are proud of their strong curriculum and their successful, annual student performance on the Texas Assessment of Academic Skills (TAAS) exam.

The Meridian ISD strives to provide a challenging curriculum in an orderly and safe environment where students can learn social, academic and technological skills necessary to succeed in a challenging global society. The goal is for each child to possess a positive self concept, the desire to learn and the morals and ethics to become a productive citizen.

Public Library:

The Meridian library is the envy of many small towns. With more than 18,000 books in the collection, newspapers and computers with internet access, the library is a great place to complete school work, do research or take an online course. The popular Wi-Fi hotspot also allows patrons to download e-books, audios and dvd's. And, as an invaluable asset to the community, the library is utilized daily by local students and students from surrounding towns.

Of course, it is a great place for our adult citizens as well. It's friendly and cozy atmosphere offers visitors a quiet place to sit and read a book or newspaper while enjoying a cup of coffee.

The History of our County

Prior to, and after, the arrival of the first Europeans, Tawakoni, Towash and Waco Indian tribes lived in the surrounding area of Meridian. In 1721, Spanish explorers discovered the rolling hills and lush river valleys they called “bosque” which means *wooded* or *forest*. Consequently, the river running through the center of the county was named “Rio Basque.”

The area known as Bosque Territory—a part of McLennan County—was part of the Western frontier. In the winter of 1853-1854, the few settlers who lived here signed a petition asking the Texas State Legislature to create a new county.

A sale of town lots was held on July 4th, 1854 and by fall of that year William McCurry built a one-room courthouse. A square was set aside as the home of a future courthouse and businesses were built around it. The first county post office in Meridian was established by Postmaster Joseph W. Smith in 1856. The first jail was a log structure built in late 1856 and early 1857. The log courthouse was used until 1859 when a three-room courthouse was built on the northeast corner of the square.

During the Civil War, the first newspaper was published. Military rule lasted for a period of ten years.

In 1871, the three-room courthouse was destroyed by fire. In 1875 a two-story rock courthouse was built in

the middle of the courthouse square.

The town continued to grow, had many businesses and in 1881, the Santa Fe Railroad passed about one and one half miles east of the courthouse. Although inconvenient, the town did not move to the railroad.

The present courthouse was built in 1886, but in 1935, the clock tower and cupolas were removed due to structural weakness. In 2004 the commissioners voted to restore the courthouse to its original appearance. Working with the Texas Historical Commission, restoration continued and the beautifully restored courthouse was rededicated in October, 2007. Meridian and Bosque County are justifiably proud of it.

Cattle and cowboys have always been a part of Bosque County. In the early days millions of cattle and thousands of cowboys passed through Meridian along the Chisholm Trail.

The famous Chisholm Trail ran along the east of Meridian and folklorist John A. Lomax of Meridian followed the trail rides during the first half of the 20th century and is responsible for recording the cowboy’s songs, many of which are in the Smithsonian Institute today, (see page 16).

Source, in part: *The Bosque County Collection, Meridian* and in its web page at bosquecountycollection.org. Early day newspapers, journals, diaries and pictures are available for review at 101 N. Main, Meridian.

Cattle and cowboys have always been a part of Bosque County. In the early days millions of cattle and thousands of cowboys passed through Meridian along the Chisholm Trail.





Red Caboose Winery

Wine Business Monthly, the nation's leading wine industry publication, selected Red Caboose Winery and Vineyards, Meridian Texas, as one of their Top 10 Hottest Brands in the nation for 2012.

This national designation is a huge honor for Red Caboose and validates the hard work owners Gary and Evan have put into the vineyard and winery over the last nine years. They both agree that their philosophy of producing a great red wine in the old world fashion with green energy practices has now paid off with this step into the national spotlight.

For the last nine years, Wine Business Monthly has identified the top hottest brands from around the country. The magazine generates their list from wineries considered representative of market trends, innovation and leadership positions within the wine and grape growing industry. Red Caboose was noted for its fine red wine in addition to being spotlighted for its "green" practices in wine production and winery management.

Red Caboose Winery currently has 16 acres of vines

planted, mostly Mediterranean varieties, which thrive in the hot, sunny and short growing season of Texas. The winery's Tempranillo has proven itself particularly adept, with the La Reina label becoming a standout for the brand. Red Caboose is also known for its Port, Tempranillo-based blends and Viognier. Their wine labels often include art from local artists and commissioned paintings.

Their 2012 awards include: 2012 Blanc duBosque, Class Champion, Texas Class Champion, Silver; 2009 Cabernet Franc/Tempranillo, Class Champion, Texas Class Champion, Silver; 2009 Viognier, Bronze; 2009 La Reina Tempranillo, Bronze; Range Rider Tempranillo, Double Gold.



La Reina Tempranillo

© LaReina Photo: K. Smith/Studio 2



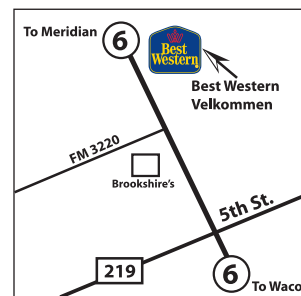
Best Western Velkommen

Hotel Amenities and Features:

- Complimentary Buffet
 - Outdoor Pool
 - Exercise Facilities
 - Laundromat
- Cable Satellite TV with Premium Channels
- Business Center
- Free Hi-Speed Internet
- Free Parking
- Coffee Maker in All Rooms
- Microwave / Refrigerator in All Rooms
- Hair Dryer / Iron & Ironing Board in All Rooms

Area Attractions Nearby:

- Shopping • Fishing
- Bosque Art Center
- Goodall-Witcher Hospital
- Museums and Galleries
- Golfing • Water Skiing



Clifton, Texas

1215 N. Ave. G, Clifton, TX 76634 • www.bestwestern.com
For reservations, call (254) 675-8999

A Texas Treasure

The spectacular, yellow, black and white Golden-Cheeked Warblers are a true Texas treasure and can be found right here in Bosque County. Each March the warblers arrive to nest and raise their young exclusively in the juniper and oak woodland areas of Meridian State Park and Central Texas.

Golden-Cheeked Warblers tear long strips of bark from the juniper trees to make their nests and use spider webs as nesting material. The warbler is endangered because many of its natural habitat areas have been cleared for residential or ranch and farm land.

With just a little bit of patience, and a little time outdoors this spring and summer, you should be able to spot many of the colorful songbirds that call Central Texas home.

Sheri Hemrick specializes in nature photography and is the photographer for the Cameron Park Zoo in Waco, the district photographer for Hillsboro ISD, the photographer for



Golden-Cheeked Warbler

Photo courtesy of Sheri Hemrick

Hillsboro Sports Association and Tolar Youth Football. Contact her at (254) 266-0005, www.gotpictures.us, or sheri@hemricks.com.

Colorful Splendor

While attending to our spring and summer lawn duties here in Bosque County, a vast array of colorful, roadside gems wait patiently for our visual attention. Bravely pushing their way upward—and competing with native and invasive grasses—are those spectacular, multicolored jewels we call wildflowers. Each spring and summer—after surviving the previous years' blistering, late summer, Texas heat—they reward us once more by parading their colorful splendor.

In spring, summer and even fall, Bosque County boasts a myriad of wildflower species. Bosque County has its own abundance of blue, purple, yellow, orange, red, white and pink blooms to enjoy.

There are over 5,000 species in Texas and we have at least 1000 in our area.

As April ends and May arrives, foxgloves, phlox, winecups, Indian blanket, prairie flax and gyp blue curls show their heads. By June, the soft colors of spring diminish and the hot days bring on standing cypress, night shades and the Engelmann daisy. The milkweeds are preparing nourishment for newborn Monarch butterflies.

Paintbrush spikes are appearing in degrees of pink, lavender, salmon and white. Blue-eyed grass and vervain sometimes are hidden, but the primrose pedals are large enough to contrast with the green foliage of other plants and make it appear as though marshmallows dot our roadsides and pastures.

It's a time to drop everything, fill your gas tank, load your camera, pack a snack and drive in any direction in the county. Breathe the clean, country air (take your allergy tablet as a precaution), then celebrate yet another season that promises the full-spectrum

color, wonder and reverence of our native, Texas flowers in Bosque County.

Whether you hike, bike or drive, take advantage of the roadside explosion of color

in Bosque County.

Information contributed by Donna Stevens, AgriLife Extension Service. (Purple coneflower and sensitive briar photos courtesy of Donna Stevens, AgriLife Extension Svc. Bluebonnet,

downy paintbrush, plains fleabane, Texas bluebells photos © Kimberley Smith/Studio 2)



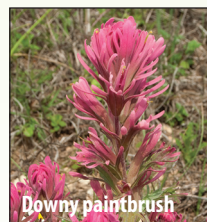
Purple coneflower



Plains fleabane



Sensitive briar



Downy paintbrush



Texas bluebells



Meridian Artists

George Hallmark

George Hallmark, nationally known artist, who now resides in Meridian, was born and raised in north-central Texas. George was an architectural designer and commercial artist before turning to easel painting. Voted the official Texas State Artist in 1988, his work can be found in many prestigious private and corporate collections, including those of Texas Instruments, the Medical Heritage Collection, the Texas Capitol, MBNA, and the U.S. Capitol in Washington, D.C.

Hallmark's work has been featured in *Art of the West*, *Southwest Art*, *U.S. Art*, and *Western Art Collector* magazines. He is an annual participant in the Prix de West Exhibition and Sale at the National Cowboy & Western Heritage Museum in Oklahoma City, and the *Masters of the American West Fine Art Exhibition and Sale* at the Autry National Center in Los Angeles. Hallmark also participates in the Eiteljorg Museum's Quest for the West Show in Indianapolis and the American Masters Show at the Salmagundi Club in New York.



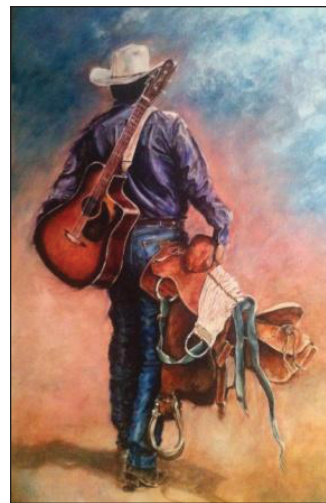
In 2011 Hallmark won the Silver Medal for Oil Painting at the Phoenix Art Museum's *The West Select* exhibition, had a retrospective exhibition at the Eiteljorg Museum, and was the Featured Artist in the National Wildlife Museum's Miniatures and More Show. George was awarded the Western Art and Architecture "Publishers Award" at the Autry Museum's "Masters of the American West Show" in Los Angeles, CA on February, 2010 and the 2010 Quest for the West's Artist of Distinction Award. *Biography courtesy of the Eiteljorg Museum (www.Eiteljorg.org)*



Leland Hensley

Meridian is the home to native Texan, Leland Hensley. While attending Sul Ross State University in Alpine, he developed a passion for the art of rawhide braiding. He has visited Argentina several times and developed a style that sets his work apart. He draws from South America, traditional styles of Spain, old Mexico and the unique motifs that have arisen from the blending of styles along the Texas/Mexico border. Leland's work has developed a great reputation among collectors and working cowboys for its unique design, beauty, and rugged functionality.

Leland has been a member of the Traditional Cowboy Arts Association since 2001 and was AWA Braider of the Year in 2003. His work has been exhibited at the National Cowboy and Western Heritage Museum in Oklahoma City, Elko, Nevada, Sun Valley, Idaho and "The Trappings of Texas", hosted by the Museum of the Big Bend, Alpine, Texas, where Leland has been the guest curator of gear since 2002.



Dawn Sharp

Native Texan, Dawn Sharp, grew up in the small community of Valley Mills in Bosque County, which is synonymous with fine artists. Her passion for art became evident at an early age as she began drawing and creating small carvings out of wood and bars of soap. "God gave me a gift for creativity—inspired by horses and a love of all things Western—which



MERIDIAN



STORE HOURS:

M–F 7:30–6:00

Sat. 8:00–6:00

Sun. 1:00–5:00

9241 State Hwy. 6
Meridian, TX 76665

(254) 435-2251

has manifested in sculpture,” says Dawn. With no formal art training, Dawn learned from many of today’s finest artists including Bruce Greene, CAA, Jason Scull, CAA, Mehl Lawson, CAA, George Hallmark, Jerry Jordan, T.A.O.S., Doug Scott, Julie T. Champman and others.

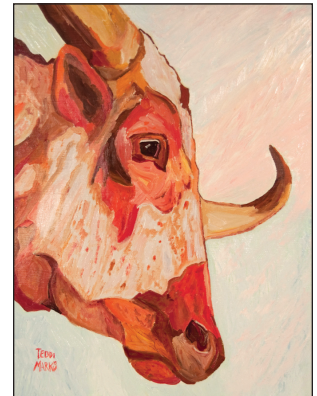
“Sculpture is very different from drawing or painting. In sculpture, I must create interest and ‘flow’ from every angle. A story must be told, keeping the viewer’s eye moving throughout the piece, while still allowing them to be personally ‘involved’ and finish the story, mentally. Every sculpture must stand alone—creating that story independently—or it doesn’t work,” says Dawn.

Dawn presently lives with her husband, Michael, and their six children in Meridian. “My family and faith are most important to me. They are what excite me and inspire me!” Dawn concludes.

Teddi Marks

An oil painting, “Jack of all trades,” by Meridian artist Teddi Marks was selected as one of the 171 pieces to enter competition in the 2011 Bosque Art Show and she placed third in the Acrylic category with a piece titled “Desert Boogie”.

I just love jack rabbits and crows,” Marks said about her inspiration for her painting. “I make my paintings colorful—color makes you feel good,” she continued. And, Marks’ works stand out with her use of vibrant colors. Nearing seventy, Marks began painting just two years ago. “When visiting art shows and museums, I always thought ‘I wish I could do that,’” Marks said. With encouragement from local artists, Marks focused on her creativity and overcame her reservations about her abilities. “After my first painting—a cactus—I thought, ‘Gosh, maybe I can do this.’ “It is a fine adventure, constantly evolving and I’m enjoying the journey. It takes me to a garden of Eden, where everything is relaxing and beautiful. I never realized that would be the reward. I want to do this the rest of my life.” “My goal is to develop my own personal style. And, to improve, I must be my own worst critic,” Marks concluded.



© K. Smith/Studio 2

National Championship Barbecue Cookoff

Aromatic smoke fills the fall air as meticulous chefs compete for the grand prize. The National Championship Barbecue Cookoff is held the 4th Saturday each October and offers a fair, food and entertainment.

The Annual National Championship Barbecue Cookoff features over 200 cooking teams from Texas and neighboring states; competing for \$20,000 dollars in prize money. Entry in the cookoff is by invitation only and teams must be winners of qualifying events to receive an invitation. Come out and watch the professionals, sample their handiwork and vote for your favorite recipe, (see ad page 13).



© K. Smith/Studio 2



RARE
Motorsports

Serving Beautiful Bosque County and
the rest of the world from Meridian, Texas.

Specializing in Farm, Ranch and Hunting Vehicles.

UTVs, ATVs, Dune Buggies and Motorcycles. Sales and Service.

254-435-9898 www.rareoffroad.com

414 W. Morgan • Meridian, Texas 76665
9AM – 6PM Tuesday – Friday • Until 2PM on Saturday

Calendar of Events

March

Texas Independence Week
Meridian Library Jewels and Jeans Gala
County Wide Easter Egg Hunt & Spring Fling

April

Annual Bosque County-Wide Garage Sale
Annual Chamber Banquet

June

Central Texas Youth Fair
ChiggerFest & Bosque County Go Texan BBQ Cook-off
TIHA POWWOW
MHS Graduation

October

FUMC Lord's Harvest
National Championship Barbecue Cook-off

November

Opening Day-Deer Season

December

Christmas on the Bosque - Market & Parade

March – November

Market on the Square every Saturday, 9a – 2p

Always Ready To Answer Our Members' Call

Local People.

Local Pride.

United Cooperative Services

Your Touchstone Energy® Cooperative

www.united-cs.com

The advertisement features two men in work attire. The man on the left is wearing a white hard hat, safety glasses, and heavy-duty work gloves, holding a tool. The man on the right is wearing a white baseball cap and a khaki button-down shirt with the United Cooperative Services logo. The background is a solid green color.

Chamber of Commerce

Gold Members



Business Partners

City of Meridian
First National Bank
First Security State Bank

Texas-New Mexico Power
United Cooperative Services

Bronze Associate Members

Rick & Jan Goon
Don & Mary Beth McMahon
Mark & Teresa McMahon

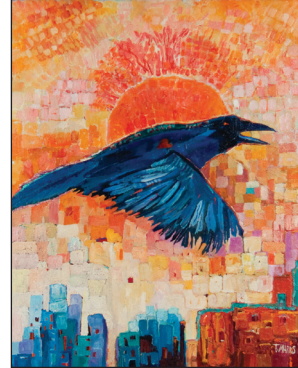
Benefits of Membership

Member Promotions
Member only Referrals
Monthly Membership Meetings
Networking Opportunities
Membership Directory Listing
Website Listing
Quarterly Newsletter
Ribbon Cuttings
Community Involvement
Special Events

TEDDI MARKS ANTIQUES & ART

~ Mexican Folk Art ~
~ Western & Southwestern Santa Fe Style Antiques ~

122 N. MAIN ST. • MERIDIAN, TEXAS (Next to Cactus Grill)
(254) 652-2441



Chamber of Commerce Leadership Team

Board of Directors:

President – Madelyn Rieke
Vice-President – James Webb
Secretary – Miriam Wallace
Treasurer – Sharla Rowland

Director – Linda Calhoun
Director – Jim Cole
Director – Jason Hurley
Director – Juanita Miller
Director – Melissa Zuehlke

Staff:

Office Manager – Kay Duke
Office Assistant – Teresa McMahon

Associate Members:

Peggy Brantley
Don & Corinne Brock
Jim & Patricia Cole
Kenn & Karen Cornett
L. Tom Cospser
Richard & Jane Creech
David & Kay Duke
Rick & Jan Goon
Gene & Aline Harville
Mary Jones
Sue B. Kerley
Don & Mary Beth McMahon
Mark & Teresa McMahon
Ray & Ernestene Miller
Pat Perry
Fuzz & Bobby Spitzer



*Friendly,
Professional
Real Estate
Service*



215 W. 5th St. Clifton, TX 76634 • (254) 675-3818
www.BosqueCountyProperties.com

Opportunities for Involvement

Civic Improvement Committee:

To improve and instill civic pride in Meridian;
to propose ideas and plans to make Meridian a more attractive place in which to live and shop.

Marketing/Tourism Committee:

To develop a Chamber marketing plan, produce and develop programs that provide member businesses with ideas, promotions and assistance to improve consumer relationships, sales and productivity. Promote and develop ideas to increase tourism in Meridian and Bosque County.

Special Events Committees:

To develop, plan, organize and promote any event the Membership votes to sponsor or support during the year.

.....

Mission Statement:

The mission of the Meridian Chamber of Commerce is to promote expansion and growth of our businesses through commerce and tourism and to partner with other local organizations to promote civic programs designed to increase civic pride in our community to make Meridian a great place to live, work and play.

★
Annual

NATIONAL CHAMPIONSHIP BARBECUE



COOKOFF
MERIDIAN TEXAS

Over 200 Teams Compete for the
**Championship Trophy
& Prize Money**

4th Saturday in October
9:00am - 5:00pm

Buy People's Choice Tickets to taste
& vote for your favorite BBQ...

Other activities include:

- Antique Car Show
- Antique Tractor Show
- Parade • Carnival
- Gunfighter Shows
- Musical Entertainment
- Arts & Crafts
- Food Vendors • Activities for the Kids and More!



Beautiful Bosque Bottoms Campgrounds
(RV or Tent Camping & Vendor Spots
Available with Reservations)

For more information call
(254)435-6113

email: nbc9414@sbcglobal.net
or visit our website:
<http://bbq.htcomp.net>

★

Early Residents

John Avery Lomax—"The Ballad Hunter"

One of the greatest folklorists and ethnomusicologists in American history got his start in Meridian, Texas. John A. Lomax was one of the most significant early residents of Meridian, Bosque County, Texas, coming here from Mississippi by covered wagon, at the age of two in 1869. As a boy growing up on the home place just north of Meridian he became fascinated with the songs of the cowboys moving cattle along the branch of the Chisholm Trail which ran nearby. Young Lomax spent hours listening to the songs and writing down the words and at a very young age, John A. Lomax began recording the cowboy songs that would become the crossroads of country, popular and folk music.

Texas Country Music is rooted in the traditional cowboy songs, songs that are a unique part of America, a part of our history that would have surely been lost except for one man's boyhood fascination and his later life determination.



Through the preservation efforts of John Lomax he kept open a window in history through which the cowboy's music gives us an understanding of much of his culture and became the tap root of not only Texas Country Music but other forms of music. For more information visit www.LomaxTexasMusicGathering.com

This bronze sculpture by Dawn Sharp titled John A. Lomax, "The Ballad Hunter" was completed in 2010. It depicts a young Lomax, sitting atop his pony, Selim, and recording the words of a nearby cowboy serenading his herd on the Chisholm Trail in Bosque County, Texas.



CITIZENS STATE BANK

More than just great rates!

We offer products to make banking easier and more convenient for you!
Checking, Savings, IRA's, CD's and many more...

• Free Internet Banking • Free Bill Pay
MasterCard Debit Card Available

Lobby Hours: 8:30 a.m.—3:30 p.m.,
Saturday 9 a.m.—Noon
Drive thru: Mon.—Fri. 8 a.m.—4 p.m.
Saturday 9 a.m.—Noon

Lobby and
Drive-thru open
Saturdays!!

Come see us at
our new location:
505 W. 5th,
Clifton



505 W. 5th, Clifton • (254) 675-2211 • www.CitizensStateBankTX.com

Main Street ANTIQUES & INTERIORS



*A Unique Collection of New & Old
for You & Your Home.*

Antiques • Vintage Accessories • Gifts
Art • Music • Books • Jewelry • Clothing

Linda Calhoun

(254) 435-2227 Hours: Mon. – Sat., 10–5

Fax: (254) 435-6244 • 103 N. Main • P.O. Box 946, Meridian, TX 76665

*Sassy says
"Come see us!"*



Community Profile: City of Meridian

Location

State of Texas
 County of Bosque
 66 miles Southwest of Dallas/Fort Worth,
 127 miles North of Austin

Population

	City	County
2010	1,493	18,212
2000	1,490	17,204
1990	1,390	15,125

Taxation

Ad Valorem Tax Rates (Per \$100 Assessed Value Oct. 2012)

Bosque County	\$.4056
Meridian, City	\$.4999
Meridian ISD	\$ 1.366
Middle Trinity Groundwater	\$.0150
Total Ad Valorem Taxes	\$ 2.28

Sales Taxes

Municipal Sales Tax	1%
State Sales Tax	6.25%
Economic Development	0.5%
County Sales Tax	0.5%
Total Sales Taxes	8.25%

City Government

Type:	Council/Mayor
Number Council:	5
Municipal Police:	2
Volunteer Firefighters:	24
ISO Rating:	Pending
City Zoning Body:	Yes
Master Plan:	Yes

Utilities

Water

Supplied by: City of Meridian
 Source: 3 Trinity Wells
 Plus surface water Bosque River
 Max Capacity: 750,000 gal.
 Max daily use: 150,000 gal.

Pressure on mains: 45 PSI
 Storage Capacity: 750,000 gal.
 Size of Mains: 2" to 12"
 System looped: Partial

Sewer

Type Treatment Plant: Oxidation
 Max Capacity: 450,000 gal.
 Max daily use: 250,000 gal.
 Projects under construction: Yes

Natural Gas

Atmos Energy
 BTU content per cubic foot: 1,000

Education

Meridian Independent School District
 Public School Budget: \$4.9 million

	Schools	Enrollment
Elementary	1	278
Jr High/High	1	226
Headstart	1	20

Bosque County

Bosque County Co-op: 37

Area Universities/Colleges

Hill College/Meridian Campus
 Hill College – Hillsboro
 Tarleton State University – Stephenville
 Baylor University – Waco

Health Care

Goodall Witcher Hospital, Clifton, TX
 Total Hospital Beds: 33
 Total Doctors: 5
 Total Nurse Practitioners: 4

Total Nursing Home beds: 83
 Independent senior living units: 20

ABSTRACT & TITLE COMPANIES

Bosque Cen-Tex Title, Inc.

John & Mary Hastings
202 W. Morgan
PO Box 899
Meridian, TX 76665
(254) 435-2722

ACCOUNTING

Jane S. Murphey, CPA

Jane Murphey
120 S. Erath
PO Box 205
Meridian, TX 76665
(254) 435-2260

ADVERTISING

Yellow Book USA

Dave Hargrave
816 Lake Air Dr.
Waco, TX 76710
(254) 715-8914
www.yellowbook.com

Your Community PhoneBook

Jim Webb
2318 E. Main St.
Snellville, GA. 30078
(888) 960-2949
www.CommunityBook.com

AGRICULTURE- FEED DEALERS

Mr. Ed's Country Feed Store

Ed Goodwin
9390 Hwy 6
Meridian, TX 76665
(254) 435-9595

ANTIQUES / HOME DECOR

Barker's Pharmacy & Court- house Gifts

Ronnie Barker
103 S. Main
PO Box 385
Meridian, TX 76665
(254) 435-2772

Jackie's Antiques

Jackie Curry Ross
124 W. Morgan St.
Meridian, TX 76665
(254) 435-2892

Main Street Antiques & Interiors

Linda Calhoun
103 N. Main
Meridian, TX 76665
(254) 435-2227

Southern Charm Antiques & More

Beverly Huffman
506 W. Morgan
Meridian, TX 76665
(254) 855-0634

Teddi Marks Antiques

Teddi Marks
122 N. Main St.
Meridian, TX 76665
(254) 435-9393

Webb-Hardin Estate Warehouse

James Webb & James Hardin
301 S. Main
Meridian, TX 76665
(254) 435-2586 or 978-1680

APPLIANCES

Rountree Appliance, Inc.

Virginia Rountree
815 N. Ave. G
Clifton, TX 76634
(254) 675-3517
www.rountreeappliance.com

ATTORNEYS

Koehler Law Firm, PC

Natalie Cobb Koehler
510 W. Morgan
PO Box 215
Meridian, TX 76665
(254) 435-2000
www.koehlerlawfirm.net

Smith & Bratcher, PC

Kent Bratcher
113 W. River
PO Box 142
Meridian, TX 76665
(254) 435-2361

AUDIO & VISUAL PRODUCTION

Wallace Sight & Sound

Matt & Miriam Wallace
800 CR 4120
Meridian, TX 76665
(972) 813-0299
www.wssp-inc.com

AUTO PARTS / REPAIR & SERVICE

Briley Auto Supply

Greg Garland
121 N. Main
PO Box 738
Meridian, TX 76665
(254) 435-2212

Put your boots on
and jump in the
truck! Let us drive
you through Texas
to find the perfect
place for you to
call home.



Stefanie Cobb, Owner & Broker

Multi-Million Dollar Producer

972-989-5220

Tai Cobb-Klam, Ranch Sales

Multi-Million Dollar Producer

254-253-0157



www.COBBRANCHPROPERTIES.com



Land is a safe haven for your investment dollar.

Bowman Tire & Wheel

Bo Bowman
 529 Depot
 Meridian, TX 76665
 (254) 435-9575
 www.bowmanstire.com

BEAUTY & HAIR SALONS**Cut-N-Up**

Kristy Murphy
 404 W. Morgan
 PO Box 521
 Meridian, TX 76665
 (254) 435-6006

BEVERAGES**Highlander Spirits LLC**

Chas Walts
 9376 Hwy 6
 Meridian, TX 76665
 (254) 435-9177

CAR WASH**Meridian Car Wash**

Kathy Jackson
 108 E. Morgan
 Meridian, TX 76665
 (254) 435-6181

CEDAR POSTS / CEDAR LUMBER**Myers Cedar Yard**

Doug Lavender
 9497 State Hwy 6
 Meridian, TX 76665
 (254) 435-6857
 www.myers-cedaryard.com

CHRISTMAS TREE FARM**Radde Tannenbaum Farm**

Kenneth & Kathy Radde
 2511 CR 1060
 Meridian, TX 76665
 (817) 313-2406
 www.radderanch.net

CHURCHES**Bosque County Cowboy Church**

Sharon Doss
 7023 SH6
 Clifton, TX 76634
 (254) 205-7103
 www.bosquecountycowboychurch.com

Faith Luthern Church

Rev. Joan Iker
 Hwy. 22/FM 1991
 PO Box 278
 Meridian, TX 76665
 (254) 435-2774

First Baptist Church

Rev. Colin Errington
 207 N. Hill St.
 PO Box 467
 Meridian, TX 76665
 (254) 435-6007

First United Methodist Church

Rev. Kevin Wilson
 300 N. Main St.
 PO Box 334
 Meridian, TX 76665
 (254) 435-2218

Market on the Square
** Bosque County Courthouse **

Every Saturday, 9am to 2pm
(except during other events or inclement weather)

Arts & Crafts ~ Delicious Baked Goods
Home Canned Items
Farm Fresh Produce
Handmade Soaps

** Meridian, Texas*
Top of the Hill Country

You talk. We listen. In person.

**Stacy R Brooks, AAMS®**

Financial Advisor

715 South Ave G
 Clifton, TX 76634
 254-675-3023

Member SIPC
 www.edwardjones.com

Edward Jones®
 MAKING SENSE OF INVESTING

First United Pentecostal Church

Rev. James G. Webb
714 Bosque
Meridian, TX 76665
(254) 978-1680

CONSTRUCTION - REMODELING

JP'S Remodeling

John J. Palicia
707 N. Main St.
Meridian, TX 76665
(254) 580-3608
www.jpsremodeling.yolasite.com

COPIERS SALES & SERVICE

CTWP

3730 Franklin Ave.
Waco, TX 76710
(254) 752-0376
www.ctwp.com

CUSTODIAL CARE

One On One Personal Home Care

Bob Crabtree
54A West Elm. St.
Hillsboro, TX 76645
(866) 225-2100
www.phs-texas.com

DENTAL OFFICE

Mustang Dental Care

Jason & Kristen Hurley, D.D.S.
101 W. River St.
PO Box 218
Meridian, TX 76665
(254) 435-6002

DRY CLEANING/LAUNDRY

Tha Washhouse & Gift Shop

Kathy Phillips Litle
329 West 5th St.
Clifton, TX. 76634
(254) 675-4331

EDUCATION

Meridian ISD

Dr. John Horak
204 2nd St.
PO Box 349
Meridian, TX 76665
(254) 435-2081
www.meridianisd.com

EVAPORATIVE COOLING

Cooler Center

Susan Vance
209 PR 2120
Meridian, TX 76665
(254) 435-2960
www.CoolerCenter.com

FINANCIAL/INVESTMENTS/ BANKING

Citizens State Bank

Tammy Norton
505 West 5th Street
PO Box 33
Clifton, TX 76634
(254) 675-2211
www.citizensstatebanktx.com

Edward Jones Investments

Stacy Brooks
715 S. Ave. G
Clifton, TX. 76634
(254) 675-3023
www.EdwardJones.com

First Community Bank

Sharla Rowland
200 W. Morgan
PO Box 527
Meridian, TX. 76665
(254) 435-2351
www.firstcommunitybank.com



Personal Homecare Services, Inc.

24 Hour Live-in Care

Your Nursing Home Alternative

Serving Texas Since 2004

1-866-225-2100

BOSQUE LIVING

MAGAZINE



The Publication for the Residents and Businesses of Central Texas
(254) 675-4222 • bosquelivingmagazine.com



- Safe & Secluded
- Central Heat & Air
- 4' x 13' Indoor Kennels
- Compassionate Care
- Large, Outdoor Exercise Area
- Reinforced Training

The River's Bend
 Helen M. Hubler
 P.O. Box 228, Clifton, TX

254-675-4936

Doggie Drop Inn

www.DoggieDropInn.com

email: doggiedropinn2@clear.net

First National Bank
 Roger Parks
 115 S. Main
 PO Box 696
 Meridian, TX. 76665
 (254) 435-6100
www.fnbbosque.com

First Security State Bank
 Tom Henderson
 9353 Hwy. 6
 PO Box 401
 Meridian, TX. 76665
 (254) 435-9955
www.fssbtexas.com

Wells Fargo Advisors, LLC
 Grant Ferguson, Financial
 Advisor
 2000 E. Lamar Blvd. Ste 300
 Arlington, TX. 76006
 (800) 288-9652
www.wfadvisors.com/grant.ferguson

FUNERAL HOMES & SERVICES

Lawson Funeral Home
 Larry & Beverly Lawson
 803 N. Main
 PO Box 616
 Meridian, TX 76665
 (254) 435-2792
www.LawsonFuneralHome.net

GOLF COURSE

Bosque Valley Golf Club
 Mark Hamersley
 347 CR 1055
 PO Box 759
 Meridian, TX 76665
 (254) 435-2692

GOVERNMENT

City of Meridian
 Marie Garland
 111 N. Main
 PO Box 306
 Meridian, TX 76665
 (254) 435-2381
www.MeridianTexas.us

GROCERY STORES

Brookshire's Grocery
 Jose Ritz
 300 S. Hwy. 6
 Meridian, TX 76665
 (254) 435-2754
www.Brookshires.com

HARDWARE

Meridian Ace Hardware
 Dennis Clark
 9241 Hwy. 6
 PO Box 408
 Meridian, TX 76665
 (254) 435-2251

HEALTHCARE

Goodall-Witcher
 101 S. Avenue T
 PO Box 549
 Clifton, TX 76634
 (254) 675-8322
www.gwhf.org

INSURANCE

Avirett Agency, Inc.
 Janice Merchant
 123 N. Main
 PO Box 495
 Meridian, TX. 76665
 (254) 435-2342
www.AvirettInsurance.com

Avirett Agency Inc.

Auto • Home • Life • Business

Full Service Insurance since 1932

123 N. Main, Meridian, TX 76665
 1 block from Courthouse

www.AvirettInsurance.com
 (254) 435-2342

Bosque Insurance Agency

Sonia Monrreal
 116 N. Main St.
 PO Box 484
 Meridian, TX. 76665
 (254) 435-2315

KENNEL**The River's Bend Doggie Drop Inn**

Helen M. Hubler
 PO Box 228
 Clifton, TX 76634
 (254) 675-4936
 www.DoggieDropInn.com

LOAN SERVICES**A Plus Loan Service, LLC**

Randy Vanek
 PO Box 384
 9289 Hwy 6
 Meridian, TX. 76665
 (254) 435-2885

LODGING**Best Western Velkommen**

Andy Nathu
 1215 N Avenue G
 Clifton, TX 76634
 (254) 675-8999
 www.Bestwestern.com

Bosque River Retreat

Sally Griffiths
 315 PR 2352
 Meridian, TX 76665
 (512) 736-7390

Screen Door Inn

Phyllis Gamble
 110 N. Ave G
 Clifton, TX. 76634
 (254) 375-7829
 www.screendoorinn.com

MANUFACTURING / FOOD PROCESSING**Double B Foods**

Rick Borden
 109 E. Morgan
 PO Box 615
 Meridian, TX 76665
 (254) 435-6187

MEAT PROCESSING**Meridian Frozen Food Locker**

Raymond & Rosemary Trujillo
 106 Morgan
 Meridian, TX 76665
 (254) 435-2803

**Cut-N-Up**

A Full Service Salon for Men & Women

Specializing in:

Haircuts ~ Styling ~ Foil
 Perms ~ Color
 Wedding & Prom Up-Do's

Open: Tuesday - Saturday

Kristy Murphy, Barber / Stylist

Home: (254) 435-6208

Ann Clark, Stylist, Home: (254) 435-2780

Shirley Ogle, Stylist

Home: (254) 597-1203

404 W. Morgan St.

Meridian, TX 76665

(254) 435-2838 ~ (254) 435-6006

CARLISLE REAL ESTATE

MERIDIAN, TEXAS

We sell Central Texas

(254) 435-6151

Sidney Carlisle
(254) 978-0373

Wesley Beeman
(254) 386-1105

Roger Bushee
(254) 640-3490

Sidney Carlisle, Broker

**MOTORCYCLE / UTILITY
VEHICLES**

RARE Motorsports

Ron & Madelyn Rieke
414 W. Morgan
PO Box 645
Meridian, TX 76665
(254) 435-9898
www.RareOffRoad.com

MAGAZINES / NEWSPAPERS

**Bosque Living Magazine/
Studio 2**

Kimberley Smith
(254) 675-4222
www.BosqueLivingMagazine.com

Meridian Tribune

Brett Voss
114 N. Main
PO Box 343
Meridian, TX 76665
(254) 435-6333
www.MeridianTribune.com

NON-PROFIT ORGANIZATIONS

Bosque County Veterans

Service Office
Corinne & Don Brock
201 N. 2nd St.
Meridian, TX 76665
(254) 205-4401

Carter Blood Care

Keith Hitt
1105 Wooded Acres, Ste. 330
Waco, TX 76710
(254) 297-4000
www.carterbloodcare.org

**Lake Whitney Chamber of
Commerce**

Diana Reed
PO BOX 604
Whitney, TX 76692
(254) 694-2540
www.LakeWhitneyChamber.
com

Meridian Lion's Club

Weldon Hamilton
PO Box 853
Meridian, TX 76665
(254) 435-6442

Meridian Public Library

Sarita Ellis
118 N. Main
PO Box 679
Meridian, TX 76665
(254) 435-9100

**National Championship
Barbecue Cookoff**

Kay Duke
PO Box 699
Meridian, TX 76665
(254) 435-6113
http://bbq.htcomp.net

**NURSING HOMES /
RETIREMENT CENTER**

Lutheran Sunset Ministries

Helen Morris
413 Sunset Avenue
PO Box 71
Clifton, TX 76034
(254) 675-8637
www.LutheranSunset.org

The Hill Top on Main

(formerly Meridian Manor)
Walter Reed
1015 N. Main
Meridian, TX. 76665
(254)435-2357

OIL & GAS EXPLORATION

Edwin S. Nichols Exploration

Susan Godwin
115 W. River St.
PO Box 326
Meridian, TX 76665
(254) 435-2344



**Custom Burgers, Hand Cut Fries • Specials
Hand Spun Shakes • AYCE Catfish-Friday Nights**
"Always Homemade, Always Fresh"
(254) 435-3002 301 W. Morgan • Meridian, TX



Jackie's Antiques
Victorian • Primitives
~ Very Old Dolls ~
Vintage Clothing dating back
to the 1860's
254-435-2892
122 W. Morgan • Meridian, Texas
Mon., Wed. thru Sat. 10-5
Closed Tues. & Sunday

Howard's Note Service
Cash for Real Estate Notes
(254) 644-2368
Free Quotes
L. Charles Howard, Owner
207 West Live Oak Street • Meridian, TX 76665
lcharleshoward@yahoo.com
www.howardsnoteservice.com



THA WASHHOUSE
CLEANERS
& LAUNDRY
**THA UNIQUE COLLECTION
GIFT SHOP**
329 West 5th, Clifton, TX 76634
Kathy Phillips Litle • 254-675-4331

PEST CONTROL

Bosque Pest & Termite

Joe & Anne West
701 CR 4100
Meridian, TX 76665
(254) 597-2221
www.bosqueservices.com

PHARMACIES

Barker's Pharmacy

Ronnie Barker
103 S. Main
PO Box 385
Meridian, TX 76665
(254) 435-2772

PLUMBING

Integrity Plumbing

Wayland & Lori Lake
P.O. Box 273
Meridian, TX 76665
(817) 559-5773

PRINTING

Commercial Printing

Darrell Ivey
609 N. Avenue G
PO Box 289
Clifton, TX 76634
(254) 675-3693

PRODUCE / PICK YOUR OWN

Hyde Farms

Dart & Gail Hyde
740 Depot St.
Meridian, TX 76665
(512) 627-8624
darthyde@hotmail.com

RADIO STATION

LKCM Radio Group, DBA

KOME
Andy Meadows
115 West 3rd
Fort Worth, TX 76102
www.921hankfm.com
www.959theranch.com

REAL ESTATE

Bosque County Properties

Rick Douglas
215 W. 5th Street
Clifton, TX 76634
(254) 675-3818
www.BosqueCountyProperties.com

Briggs Freeman Sotheby's

Int'l Real Estate
Jim Brosche
115 Main St.
Meridian, TX 76665
(817) 233-5143
www.briggsfreeman.com

Carlisle Real Estate

Sidney Carlisle
152 CR 2330
PO Box 248
Meridian, TX 76665
(254) 978-0373

Cobb Properties

Stefanie Cobb
10156 FM 219
Clifton, TX 76634
(254) 597-2381
www.cobbbranchproperties.com

JP's Remodeling

Serving Bosque County for 6 Years
Free Estimates



- Wood & Metal Framing • Drywall • Texture
- Tape & Bedding • Painting • Additions
- Porches, Decks, Sheds • Doors, Windows & Trim Work

John J. Palicia, Owner

Home: (254) 435-9556 • Cell: (254) 580-3608
707 N. Main St., Meridian, TX 76665

Abuelita's Mexican Restaurant



BEST MARGARITAS IN BOSQUE COUNTY!

To-Go Orders • Caterings & Reservations Welcome!

254-435-2801

Noel H. Jaimes, Owner • 502 W. Morgan, Meridian, TX 76665

PARTS PLUS

Briley Auto Supply

Greg Garland, Owner

Ph: (254) 435-2212 • Cell: (254) 253-0175
Fax: (254) 435-2212 • Email: gregam2006@gmail.com
121 N. Main St. • Meridian, Texas, 76665

Hours:
M-F, 8a - 5p
Sat., 8a - 12p

Webb Hardin Ware House

Antiques, décor, used furniture, and more!

Estate Sales & Services

James & Kim Webb
(254) 424-6187

James & Wanda Hardin
(254) 435-2586

Open Every 1st Thurs., Fri. & Sat., 9am - 5pm
301 S. Main • Meridian, TX 76665

The Michael Group Real Estate

Donna Orr
183 CR 1277
Morgan, TX 76671
(254) 775-4597
www.lakewhitneytexas
realestate.com

Patton Land Co.

Bob Patton
115 W. River St.
PO Box 681
Meridian, TX 76665
(254) 435-2615

Rowland Realty

Jack Rowland
119 W. River
PO Box 586
Meridian, TX 76665
(254) 435-2593

REAL ESTATE NOTE SERVICE

Howard's Note Service

Charles Howard
207 W. Live Oak
Meridian, TX 76665
(254) 644-2368

RESTAURANTS / CATERING

Abuelita's Mexican Restaurant

Noel Jaimes
502 W. Morgan
Meridian, TX 76665
(254) 435-2801

Bosque Resort Restaurant & Bar

Chris Piekarski
341 SH 22
PO Box 5146
Laguna Park, TX 76634
(254) 622-2034
www.bosqueresortrestaurant.
com

Cactus Grill

Raul & Veronica Contreras
120 N Main
Meridian, TX 76665
(254) 435-6062

China House

Yong Chen
112 W. Morgan
Meridian, TX 76665
(254) 435-2777

Morgan Street Burgers

Eric Kennedy
301 W. Morgan
PO Box 115
Meridian, TX 76665
(254) 435-3002

Simple Simons Pizza

Jesse McClure
104 E. Morgan
Meridian, TX. 76665
(254) 435-2321
www.ssmeridian.com

RV PARKS

Bosque Bottoms

Kay Duke
314 River St.
Meridian, TX. 76665
(254) 435-6113

Rusty Armadillo

Richard Munguia
1248 CR 1190
Kopperl, TX 76652
(254) 889-3866
www.rustyarmadillorvpark.com

*We Strive to Carry all Your
Livestock Needs & Pet Supplies*

**Cattle, Horse, Goat, Dog & Cat Food • Hay
Hunting & Fishing Licenses & Supplies**



(254) 435-9595

9390 Hwy. 6 • Meridian, TX 76665

Ed Goodwin • Cell: (254) 749-2844

*Stop by,
check us
out!*

Donna Orr
Realtor® and Advisor

*The Michael Group
Real Estate*

Office/Fax: (254) 775-4597 • Cell: (817) 692-1579
E-mail: donnaorr@aol.com
www.LakeWhitneyTexasRealEstate.com

**John & Mary Hastings,
Owners**

Bosque CenTex Title, Inc.
Meridian, Texas

Bosque County Bank Building
P.O. Box 899 • 202 W. Morgan
Meridian, Texas 76665

1-800-235-7613
(254) 435-2722
Fax: (254) 435-2642

MUSTANG DENTAL CARE
General Dentistry

Jason C. Hurley, D.D.S. Kristen A. Hurley, D.D.S., M.P.H.
101 W. River St. • P.O. Box 218 • Meridian, TX 76665
(254) 435-6002 • Fax: (254) 435-2900

SEPTIC TANKS & SYSTEMS

Miller Septic & Port-a-Pots
Billy & Juanita Miller
PO Box 402
Meridian, TX 76665
(254) 635-2295
www.MillerSeptic-Portapots.com

TAX SERVICES

H & R Block
Pam Hatley / Kim Gilmore
505 W. Fifth St. Ste. 250
Clifton, TX 76634
(254) 675-6626
www.HRBLOCK.com

UTILITIES

Atmos Energy
Doug Hill
1500 W. Loop 340
Waco, TX 76712
(800) 460-3030
www.AtmosEnergy.com

5

Todd Clift
267 CR 1055
Clifton, TX 76634
(254) 253-0947
www.5-five.com

Texas-New Mexico Power Co.

Danny Baize
201 N. 8th St.
Gatesville, TX 76528
(888) 866-7456
www.tnmp.com

United Cooperative Services

Patti Wagner
Hwy 22
PO Box 755
Meridian, TX 76665
(254) 435-2832
www.united-cs.com

WINERY

Red Caboose Winery
Gary or Evan McKibben
1147 CR 1110
Meridian, TX 76665
(254) 435-9911
www.redcaboosewinery.com

VETERINARY SERVICES

Bosque County Veterinary Clinic

Kathy Jackson
132 CR 2515
PO Box 695
Meridian, TX 76665
(254) 435-2612



Bowman's Tire & Wheel

New - Used - Retread (All Major Brands) - Oil Changes
24-Hour Service
Car - Pickup - 18-Wheeler - Farm
Bo Bowman

529 Depot
Meridian, TX 76665
Bowmantire@sbcglobal.net

Shop: (254) 435-9575
Cell: (254) 978-0521
Fax: (254) 435-9135

NOW 2 LOCATIONS:

101 E. Washington, Whitney, TX

254-694-8626

Lunch: Tues.-Sun.

Dinner: Weds.-Sat.

Closed Monday

120 N. Main St., Meridian, TX

254-435-6062

Lunch: Weds.-Mon.

Dinner: Thurs.-Sat.

Closed Tuesday

Cactus Grill

Both locations:

Lunch: 11am-2pm;

Dinner: 5pm-9pm

WWW.CACTUSGRILLTX.COM

Raul & Veronica Contreras,
Chef & Owners



First Community Bank

The Free Checking Bank

200 W. Morgan
Meridian, TX 76665
(254) 435-2351



JANE S. MURPHEY, P.C.

CERTIFIED PUBLIC ACCOUNTANT

120 S. ERATH • P.O. Box 205
MERIDIAN, TX 76665
PH: (254) 435-2260 • FAX: (254) 435-2552

Community Resources

City Offices - Meridian

City Hall: (254) 435-2381
Animal Control:
(254) 435-2381
Public Works:
(254) 435-2381
Police: (254) 435-2255
Public Library:
(254) 435-9100

County Offices – Bosque County

Archives & Collections:
(254) 435-6182
Automobile Registration:
(254) 435-2301
County Attorney:
(254) 435-2186
County Clerk:
(254) 435-2201
County Commissioner:
Pct. 1 (254) 435-2285
County Constable Pct.1:
(254) 435-2071
County Court of Law Judge:
(254) 435-2382 ext.9
County Judge:
(254) 435-2382
Extension Agent:
(254) 435-2331
Fire Department:
(254) 435-2300
Justice of the Peace: (254)
435-2921
Probation Department:
(254) 435-6311
Recycling Center:
(254) 435-2940
Sheriff: (254) 435-2362
Tax Assessor/Collector:
(254) 435-2301
Treasurer: (254) 435-2931

District Offices

Attorney: (254) 435-2994
Clerk: (254) 435-2334
Judge: (325) 356-5202

Elected Officials/US

US Congressman Bill Flores:
(254) 732-0748

Elected Officials/State

Governor Rick Perry:
(800) 843-5789
Senator Brian Birdwell:
(817)573-9622
Representative Rob Orr:
(817)295-5158

Food Bank: (254)435-6926

Garbage Disposal

Eagle Disposal:
(979)279-0400

Healthcare

Clifton Medical Center:
(254) 675-8322

Housing

Meridian Housing
Authority:
(254) 435-2601

Internet Services

AT&T: (800) 288-2020

Post Office: (254) 435-2261

RV Parks / Camping

Bosque Bottoms RV Park:
(254) 435-6113
Meridian State Park: (254)
435-2536
Rusty Armadillo-Kopperl:
(254) 889-3866

Schools

Meridian ISD:
(254) 435-2081
Hill College–Bosque Co.
Campus: (254) 582-2555

Senior Services

Bosque County Senior
Services: (254) 435-2930
Senior Center:
(254) 435-6093

Social Security Administration: (800) 772-1213

State Departments:

Texas Dept. of Health:
(254) 435-6331
Texas Department Human
Services: (254) 435-2302
Texas Department of Public
Safety: (254) 435-2044
Driver's License:
(254) 435-2913
Texas Maps: (512) 486-5927
Texas Parks & Wildlife
Department:
(800) 792-1112
Texas Travel and Road Con-
ditions: (800) 452-9292

Telephone

AT&T: (800) 288-2020

Tourism

Meridian Visitors Bureau:
(254) 435-2966

Transportation

Bosque County Transit Sys-
tem: (254) 435-2685

Utilities

Electricity:
5 –Five: (254) 253-0947
Texas-New Mexico Power:
(888) 866-7456
United Cooperative Services:
(254) 435-2832
Gas:
Atmos Energy:
(888) 286-6700
Water:
City of Meridian:
(254) 435-2381

Veteran's Organizations

American Legion Post 322:
(254) 675-8782
Bosque Co. Veterans Svc's
Officer: (254) 326-1201
Veterans Commission Hot-
line: (800) 252-8387
VFW Post 8553:
(254) 675-3222

Voter Registration:

(254) 435-2301

Lutheran Sunset Ministries

Hospice Sunset

- Providing in home services during end-of-life.
- Service area extends throughout Bosque County and within a 25 mile radius.

*New Flexible Menu Dining,
Menu Choices, & Accommodating Meal Times*

College Hill Assisted Living – Heckmann Residence

Providing assisted living services:

- Full meal service
- Housekeeping
- Emergency response
- Transportation
- Spiritual & recreational activities



Heckmann Residence



Sunset Home



Sunset Home



Whitestone Homes

Sunset Home

New, licensed nursing facility overlooking Bosque Valley

- Medicare-Medicaid certified
- Private & semi-private rooms
- Therapy & rehabilitation services
- Memory & Dementia care facility
- Spiritual & recreational activities



Rainbow Retirement Community

Efficiency, one and two bedroom apartments with added services of:

- Housekeeping
- Meal service (extra charge)
- Transportation
- Emergency response
- Spiritual & recreational activities



Rainbow Retirement Community



(254) 675-8637

413 Sunset Ave. • Clifton, Texas
www.LutheranSunset.org

LSM is an equal opportunity provider & employer.

License #125780



Proudly Serving Bosque County for 102~~3~~³ Years

We're friends, neighbors, volunteers and even parents just like you. Our decisions are made locally and our resources help local projects succeed.

For over 100 years, First Security State Bank has been serving and investing in the businesses and families of Bosque County. Your success is our success!

Real Time Internet Banking

Bill Pay

Debit Cards



First Security State Bank

Made in Texas, Stayed in Texas



Equal
Housing
Lender
Member FDIC

CLIFTON: 1115 W. 5th (254)675-2265 • CRANFILLS GAP: 307 Third St. (254)597-2286
MERIDIAN: Hwy 6 & 22 (254)435-9955 • WHITNEY: 1201 N. Brazos (254)694-3476

WWW.FSSBTEXAS.COM

Landscape, courthouse photos © K. Smith/Studio 2, Warbler © Sheri Hemrick

Meridian, Texas Top of the Hill Country

**Chamber of Commerce
Membership Directory and
Visitor Guide**



Get ready for a change of
pace in Meridian where you can
"take the knots out of your rope."